

## Seminar: The Economic Benefits of the Environment

“How improving and protecting our historic and natural environment boosts the local economy.”



**SATURDAY 13<sup>TH</sup> OCTOBER  
2012 AT ELY CATHEDRAL  
CENTRE**

**REGISTRATION  
10 - 10.30 AM  
FINISH  
3.30 – 4 PM**

Speakers include: **Tony Juniper**: to be confirmed • **Richard Powell**: East of England Director, National Trust • **Greg Luton**: East of England Director, English Heritage • **Andrew Balmford**: Professor of Conservation Science, University of Cambridge • **Sophie Cabot**: Engagement Manager, Norwich HEART

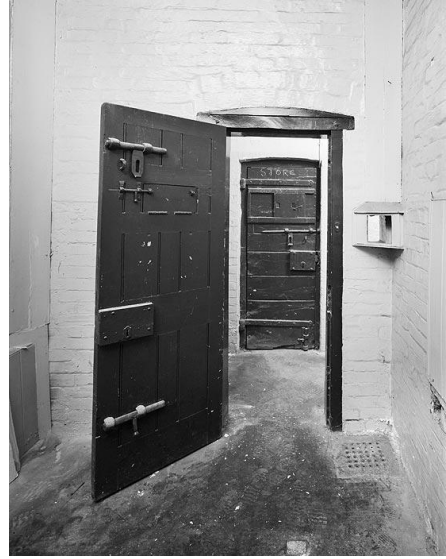
**Cost: £10 individuals (or £15 couples) by cheque payable to 'Cambridge Past, Present & Future'(to include coffee & tea). There will be a break for lunch to visit Ely's shops, cafes and Markets.**

**Venue: The Etheldreda Room, The Cathedral Centre, Palace Green, Ely, Cambs CB7 4EW. Located opposite the main entrance to Ely Cathedral – please note Ely has excellent train links.**

**Travel information:** <http://www.elycathedral.org/visitors/travelling.html>  
**Parking information:** <http://www.elycathedral.org/pdf/carparkingposter.pdf>

**Book in advance - contact:** Nigel Bell: [planning@cambridgeppf.org](mailto:planning@cambridgeppf.org) or (01223) 243830 Ext 205

After the Seminar there will be an opportunity, for those who book early, to visit Ely Magistrates Court, a Grade II\* listed building:



This Georgian building contains a Grade II\* listed courtroom, with a Magistrates' bench, dock and upper galleries with original fittings and joinery, for more details see:

[http://www.pastscape.org/hob.aspx?hob\\_id=1550331](http://www.pastscape.org/hob.aspx?hob_id=1550331)